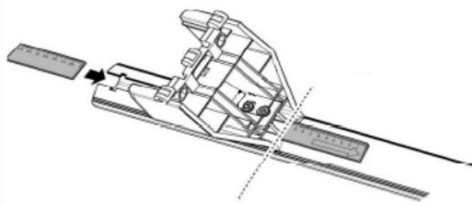
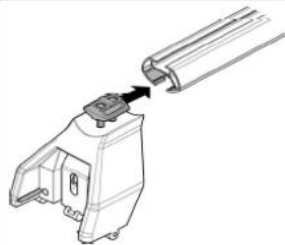
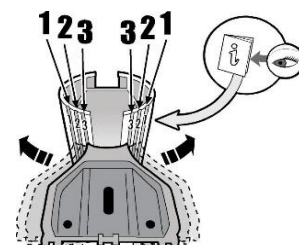
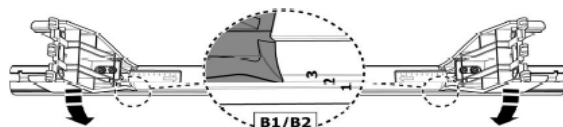
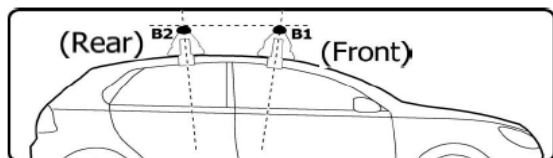


| MANUFACTURER | MODEL CAR | DOORS | MODEL YEAR | D1 | D2 |
|-----------------|-----------------------------------|-------|------------|------|------|
| AUDI | A3 (8V) | 5 | 13> | 13,9 | 12,6 |
| AUDI | A3 (8VA) Sportback | 5 | 13> | 13,9 | 12,6 |
| BMW | X1 (E84) | 5 | 09>15 | 8,6 | 8,6 |
| BMW | X3 (E83) | 5 | 04>10 | 8,0 | 6,8 |
| CHEVROLET | Volt | 4 | 12> | 5,2 | 4,9 |
| CITROEN | C5 (Mk1) | 4 | 01>08 | 4,4 | 2,3 |
| CITROEN | C-Zero | 5 | 10> | 13,9 | 14,3 |
| FIAT | Bravo | 5 | 07>14 | 7,0 | 5,9 |
| FORD | Focus III Station Wagon | 5 | 11>14 | 7,8 | 6,5 |
| FORD | Focus III Station Wagon | 5 | 14> | 7,7 | 6,6 |
| HYUNDAI | Santa Fe (DM) | 5 | 12> | 11,3 | 10,2 |
| JEEP | Cherokee (KL) | 5 | 14> | 10,3 | 10,6 |
| KIA | Carens (RP) | 5 | 13> | 10,4 | 9,4 |
| KIA | Sportage (SL) | 5 | 10>13 | 10,0 | 9,0 |
| LANCIA | Ypsilon | 5 | 11>15 | 13,7 | 13,7 |
| MAZDA | Cx-5 (KE) | 5 | 12>15 | 10,5 | 9,3 |
| MINI | Mini | 5 | 14>18 | 14,0 | 13,2 |
| MITSUBISHI | I-Miev | 5 | 10> | 14,6 | 14,6 |
| NISSAN | Leaf (ZE0) | 5 | 10>16 | 6,6 | 7,3 |
| NISSAN | Leaf (ZE1) | 5 | 18> | 7,9 | 7,0 |
| NISSAN | Pulsar | 5 | 14> | 6,2 | 6,2 |
| OPEL / VAUXHALL | Ampera | 4 | 12> | 5,9 | 4,9 |
| PEUGEOT | ION | 5 | 11> | 14,6 | 14,6 |
| RENAULT | Grand Scenic III (No Tetto Vetro) | 5 | 09>13 | 9,5 | 9,1 |
| RENAULT | Grand Scenic III (No Tetto Vetro) | 5 | 13> | 13,4 | 13,2 |
| RENAULT | Megane III Coupé | 3 | 09> | 4,7 | 6,7 |
| RENAULT | Scenic III (No Tetto Vetro) | 5 | 09>13 | 9,5 | 9,1 |
| RENAULT | Scenic III (No Tetto Vetro) | 5 | 13>16 | 13,4 | 13,2 |
| RENAULT | Scenic X Mod | 5 | 09>13 | 9,5 | 8,7 |
| SEAT | Altea | 5 | 04>09 | 5,2 | 4,3 |
| SEAT | Leon II (1P) | 4 | 05>13 | 5,8 | 4,3 |
| SEAT | Mii | 3 | 12> | 6,0 | 5,7 |
| SKODA | Citigo | 3 | 12> | 6,0 | 5,7 |
| SKODA | Citigo | 5 | 12> | 7,4 | 6,4 |
| TATA | Aria | 5 | 12> | 13,9 | 12,8 |
| VOLKSWAGEN | E Up! | 5 | 14> | 6,0 | 5,6 |
| VOLKSWAGEN | Golf Sport Van | 5 | 14> | 6,9 | 5,5 |
| VOLKSWAGEN | Up! | 3 | 11> | 6,0 | 5,6 |
| VOLKSWAGEN | Up! | 5 | 11> | 6,0 | 5,7 |

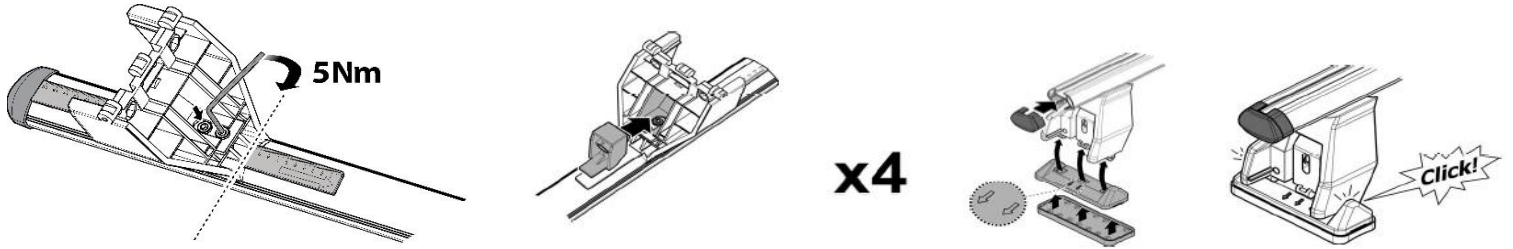


x4

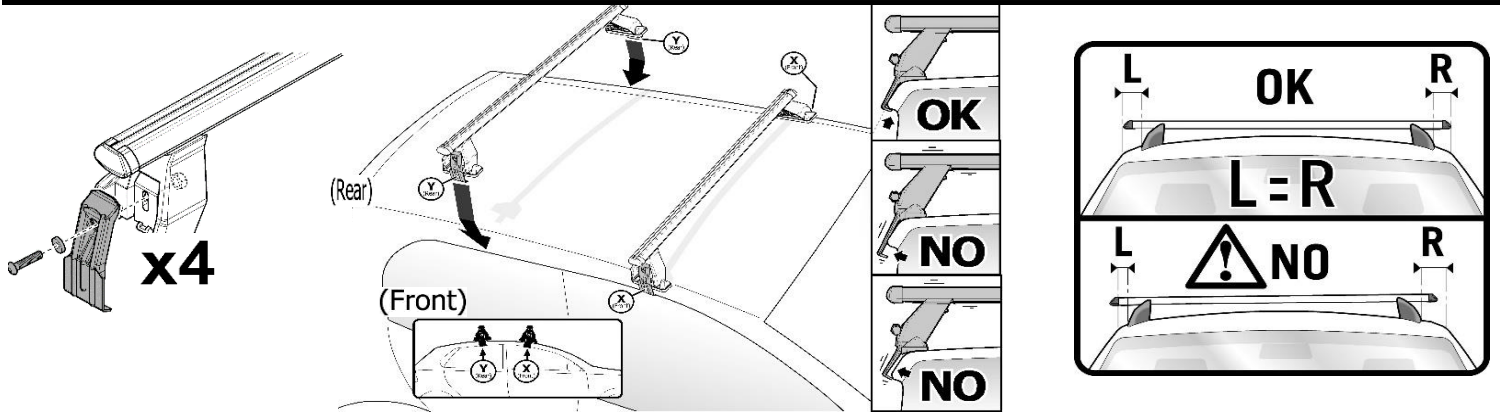


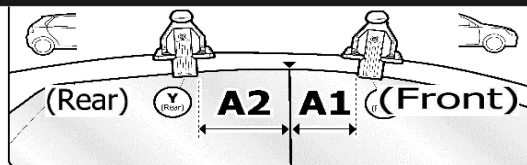
| MANUFACTURER | MODEL CAR | DOORS | MODEL YEAR | B1 | B2 |
|-----------------|-----------------------------------|-------|------------|----|----|
| AUDI | A3 (8V) | 5 | 13> | 2 | 2 |
| AUDI | A3 (8VA) Sportback | 5 | 13> | 2 | 2 |
| BMW | X1 (E84) | 5 | 09>15 | 1 | 2 |
| BMW | X3 (E83) | 5 | 04>10 | 2 | 2 |
| CHEVROLET | Volt | 4 | 12> | 1 | 2 |
| CITROEN | C5 (Mk1) | 4 | 01>08 | 2 | 2 |
| CITROEN | C-Zero | 5 | 10> | 1 | 2 |
| FIAT | Bravo | 5 | 07>14 | 1 | 2 |
| FORD | Focus III Station Wagon | 5 | 11>14 | 1 | 2 |
| FORD | Focus III Station Wagon | 5 | 14> | 1 | 2 |
| HYUNDAI | Santa Fe (DM) | 5 | 12> | 2 | 2 |
| JEEP | Cherokee (KL) | 5 | 14> | 2 | 2 |
| KIA | Carens (RP) | 5 | 13> | 1 | 2 |
| KIA | Sportage (SL) | 5 | 10>13 | 2 | 2 |
| LANCIA | Ypsilon | 5 | 11>15 | 1 | 2 |
| MAZDA | Cx-5 (KE) | 5 | 12>15 | 1 | 2 |
| MINI | Mini | 5 | 14>18 | 2 | 2 |
| MITSUBISHI | I-Miev | 5 | 10> | 1 | 2 |
| NISSAN | Leaf (ZE0) | 5 | 10>16 | 2 | 2 |
| NISSAN | Leaf (ZE1) | 5 | 18> | 2 | 2 |
| NISSAN | Pulsar | 5 | 14> | 2 | 2 |
| OPEL / VAUXHALL | Ampera | 4 | 12> | 1 | 2 |
| PEUGEOT | ION | 5 | 11> | 1 | 2 |
| RENAULT | Grand Scenic III (No Tetto Vetro) | 5 | 09>13 | 1 | 2 |
| RENAULT | Grand Scenic III (No Tetto Vetro) | 5 | 13> | 1 | 1 |
| RENAULT | Megane III Coupé | 3 | 09> | 1 | 2 |
| RENAULT | Scenic III (No Tetto Vetro) | 5 | 09>13 | 1 | 2 |
| RENAULT | Scenic III (No Tetto Vetro) | 5 | 13>16 | 1 | 1 |
| RENAULT | Scenic X Mod | 5 | 09>13 | 1 | 2 |
| SEAT | Altea | 5 | 04>09 | 2 | 2 |
| SEAT | Leon II (1P) | 4 | 05>13 | 2 | 2 |
| SEAT | Mii | 3 | 12> | 1 | 2 |
| SKODA | Citigo | 3 | 12> | 1 | 2 |
| SKODA | Citigo | 5 | 12> | 2 | 2 |
| TATA | Aria | 5 | 12> | 1 | 2 |
| VOLKSWAGEN | E Up! | 5 | 14> | 2 | 2 |
| VOLKSWAGEN | Golf Sport Van | 5 | 14> | 1 | 2 |
| VOLKSWAGEN | Up! | 3 | 11> | 2 | 2 |
| VOLKSWAGEN | Up! | 5 | 11> | 1 | 2 |

4

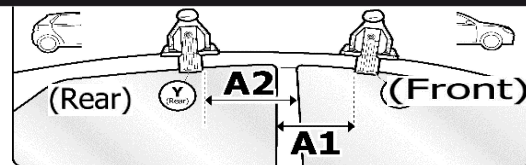


5





OR



| MANUFACTURER | MODEL CAR | DOORS | MODEL YEAR | A1 | A2 | A1 | A2 |
|-----------------|-----------------------------------|-------|------------|----|----|------|------|
| | | | | cm | cm | in | in |
| AUDI | A3 (8V) | 5 | 13> | 25 | 41 | 9,8 | 16,1 |
| AUDI | A3 (8VA) Sportback | 5 | 13> | 25 | 41 | 9,8 | 16,1 |
| BMW | X1 (E84) | 5 | 09>15 | 25 | 47 | 9,8 | 18,5 |
| BMW | X3 (E83) | 5 | 04>10 | 20 | 45 | 7,9 | 17,7 |
| CHEVROLET | Volt | 4 | 12> | 43 | 26 | 16,9 | 10,2 |
| CITROEN | C5 (Mk1) | 4 | 01>08 | 22 | 45 | 8,7 | 17,7 |
| CITROEN | C-Zero | 5 | 10> | 26 | 40 | 10,2 | 15,7 |
| FIAT | Bravo | 5 | 07>14 | 31 | 47 | 12,2 | 18,5 |
| FORD | Focus III Station Wagon | 5 | 11>14 | 16 | 47 | 6,3 | 18,5 |
| FORD | Focus III Station Wagon | 5 | 14> | 23 | 48 | 9,1 | 18,9 |
| HYUNDAI | Santa Fe (DM) | 5 | 12> | 26 | 37 | 10,2 | 14,6 |
| JEEP | Cherokee (KL) | 5 | 14> | 17 | 52 | 6,7 | 20,5 |
| KIA | Carens (RP) | 5 | 13> | 27 | 47 | 10,6 | 18,5 |
| KIA | Sportage (SL) | 5 | 10>13 | 10 | 60 | 3,9 | 23,6 |
| LANCIA | Ypsilon | 5 | 11>15 | 38 | 38 | 15,0 | 15,0 |
| MAZDA | Cx-5 (KE) | 5 | 12>15 | 24 | 44 | 9,4 | 17,3 |
| MINI | Mini | 5 | 14>18 | 30 | 25 | 11,8 | 9,8 |
| MITSUBISHI | I-Miev | 5 | 10> | 27 | 35 | 10,6 | 13,8 |
| NISSAN | Leaf (ZE0) | 5 | 10>16 | 25 | 40 | 9,8 | 15,7 |
| NISSAN | Leaf (ZE1) | 5 | 18> | 32 | 38 | 12,6 | 15,0 |
| NISSAN | Pulsar | 5 | 14> | 5 | 63 | 2,0 | 24,8 |
| OPEL / VAUXHALL | Ampera | 4 | 12> | 43 | 26 | 16,9 | 10,2 |
| PEUGEOT | ION | 5 | 11> | 27 | 35 | 10,6 | 13,8 |
| RENAULT | Grand Scenic III (No Tetto Vetro) | 5 | 09>13 | 23 | 41 | 9,1 | 16,1 |
| RENAULT | Grand Scenic III (No Tetto Vetro) | 5 | 13> | 29 | 35 | 11,4 | 13,8 |
| RENAULT | Megane III Coupé | 3 | 09> | 41 | 12 | 16,1 | 4,7 |
| RENAULT | Scenic III (No Tetto Vetro) | 5 | 09>13 | 23 | 41 | 9,1 | 16,1 |
| RENAULT | Scenic III (No Tetto Vetro) | 5 | 13>16 | 29 | 35 | 11,4 | 13,8 |
| RENAULT | Scenic X Mod | 5 | 09>13 | 23 | 41 | 9,1 | 16,1 |
| SEAT | Altea | 5 | 04>09 | 29 | 45 | 11,4 | 17,7 |
| SEAT | Leon II (1P) | 4 | 05>13 | 21 | 45 | 8,3 | 17,7 |
| SEAT | Mii | 3 | 12> | 43 | 25 | 16,9 | 9,8 |
| SKODA | Citigo | 3 | 12> | 43 | 25 | 16,9 | 9,8 |
| SKODA | Citigo | 5 | 12> | 30 | 40 | 11,8 | 15,7 |
| TATA | Aria | 5 | 12> | 29 | 60 | 11,4 | 23,6 |
| VOLKSWAGEN | E Up! | 5 | 14> | 30 | 40 | 11,8 | 15,7 |
| VOLKSWAGEN | Golf Sport Van | 5 | 14> | 32 | 45 | 12,6 | 17,7 |
| VOLKSWAGEN | Up! | 3 | 11> | 30 | 40 | 11,8 | 15,7 |
| VOLKSWAGEN | Up! | 5 | 11> | 25 | 48 | 9,8 | 18,9 |

X = predisposizione originale /original arrangement